

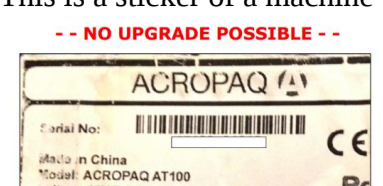
PLEASE DO NOT ORDER THIS ITEM!!!! ONLY THE TEXT IS THE UPDATE !!!!
When a new bank note is released, a firmware update of the AT100 is necessary
Please follow the next steps carefully

Last update: 7/2019

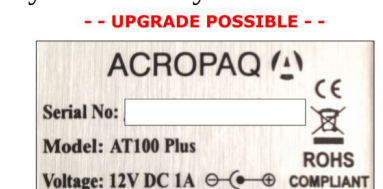
TESTED FOR THE NEW 100 & 200 EUR BILL!!!

ATTENTION:

- Make sure you have bought the AT100 update cable, this is NOT a regular USB cable, but a special USB cable with a build in COM port!
 - This installation is tested on Windows XP, Vista, Win7, Win8 and Windows10, IT IS NOT FOR MAC/LINUX!
 - please note that the first series of AT100 can't be updated!
- If on the bottom of your machine you find a sticker with a barcode, it means that your machine is from the first series and that it is too old to be updated:
 This is a sticker of a machine that can't be updated:



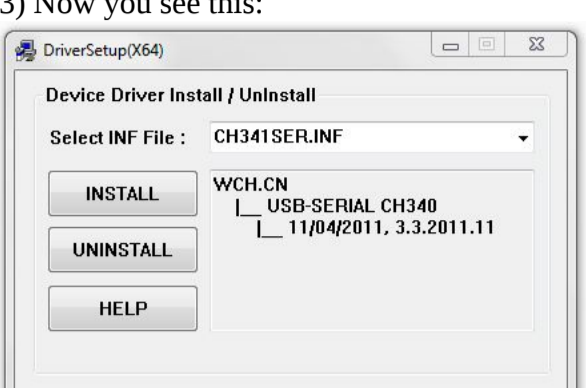
If you have on your machine this sticker, your machine can be updated:



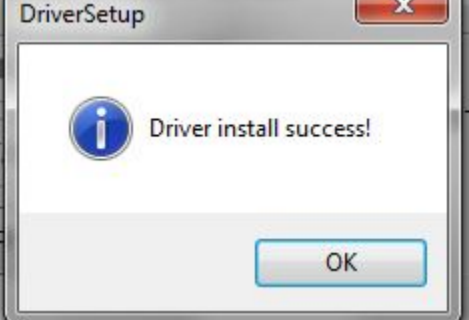
INSTALLATION:

*** Before installing the software DO NOT CONNECT THE USB CABLE to your computer ***

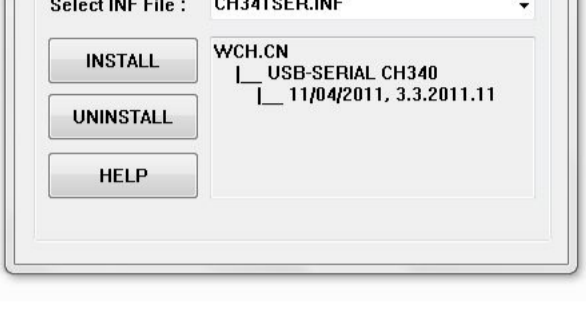
- 1.) Please download the USB driver; [click here](#) (when the window opens just click on download)
- 2.) Double click on the downloaded file
- 3.) Now you see this:



- 4.) Click on "INSTALL"
- 5.) Now you see this window:



- 6.) Click OK and close this window:

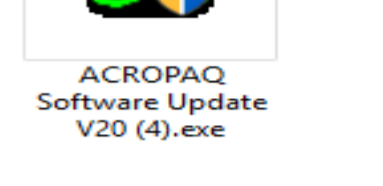


- 7.) Reboot your computer!
- 8.) After reboot, CONNECT THE USB CABLE TO YOUR COMPUTER (NOT YET TO YOUR AT100!!), this will install the COM port that is integrated in the USB cable, wait 5 minutes to be sure it is installed
- 9.) Now please download the update tool and the software-update that you want to use:

[UPDATE TOOL](#)
 Recommended: Software for detecting EUR and GBP bills: [EUR+GBP_AT100_P35.ses*](#)
 Software for detecting EUR and CHF bills: [EUR+CHF_AT100_P35.ses*](#)

*If in step 13 your device is not recognised, then please use this UPDATE TOOL with this software: [C06_LED_EUR+GBP SERIAL_AA1000001-AA1001008_AB1000001-AB1000504.EUP](#)

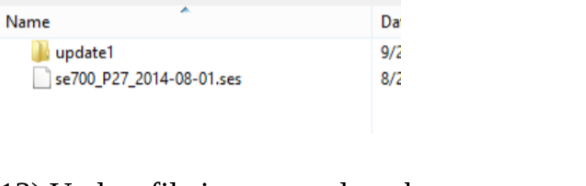
- 10.) Double click on "Update Tool.exe" :



- 11.) In this window click on "LoadFile"



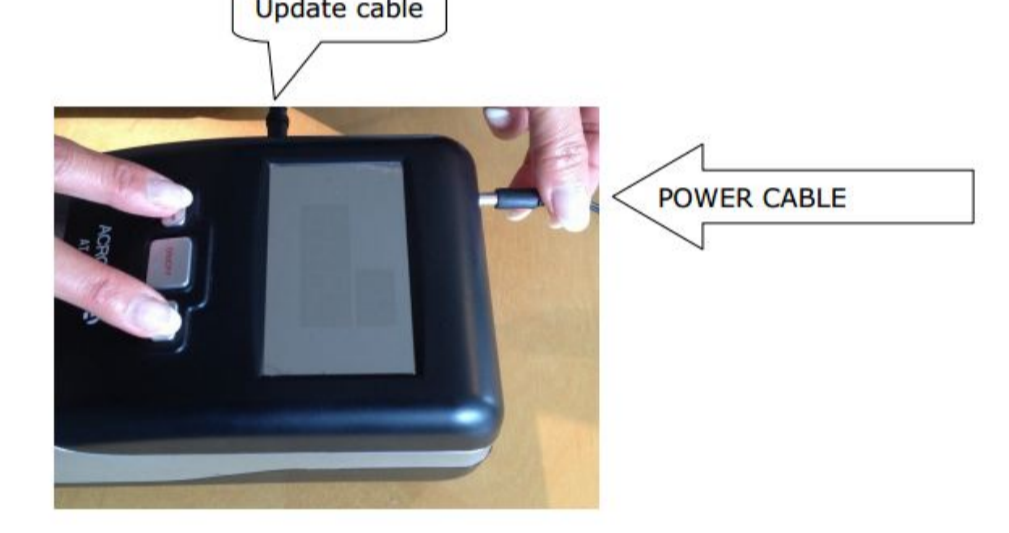
- 12.) In this window chose ("chose" means "select" or simply click on the file) your software-update file (don't look at the file name in the picture below. This is just an example!!!)



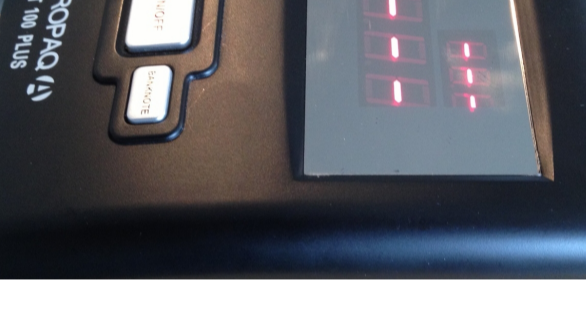
- 13.) Update file is now ready to be sent to your AT100 (File length is no longer 0) (the numbers 12336 in the picture below is just an example. Don't worry, if you see other digits!!)



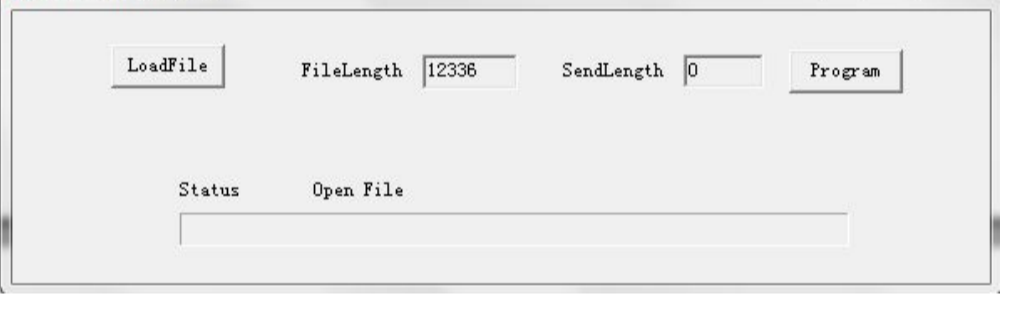
- 14.) Disconnect your ACROPAQ AT-100 from power
- 15.) Connect the other side of the cable to your machine ("updateable socket")
- 16.) Now press **simultaneously** the right and the left button and **while pressing the two buttons connect your AT100 to power** as shown here:



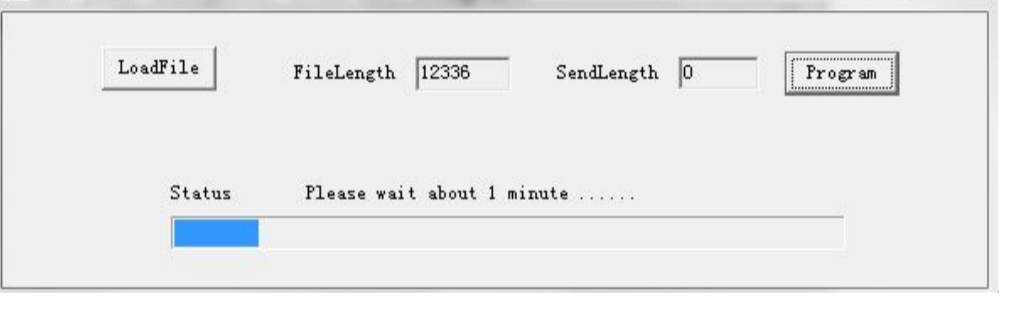
- 17.) The display will look like this:



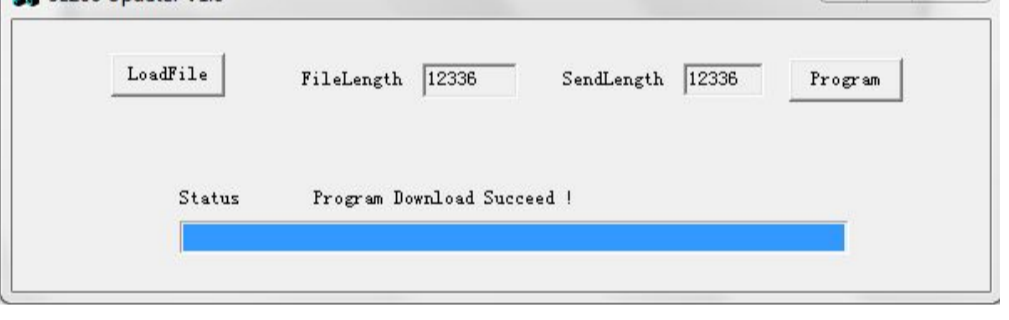
- 18.) On your computer in this window click on "Program":



- 19.) Please wait while the update is being sent to your AT-100:



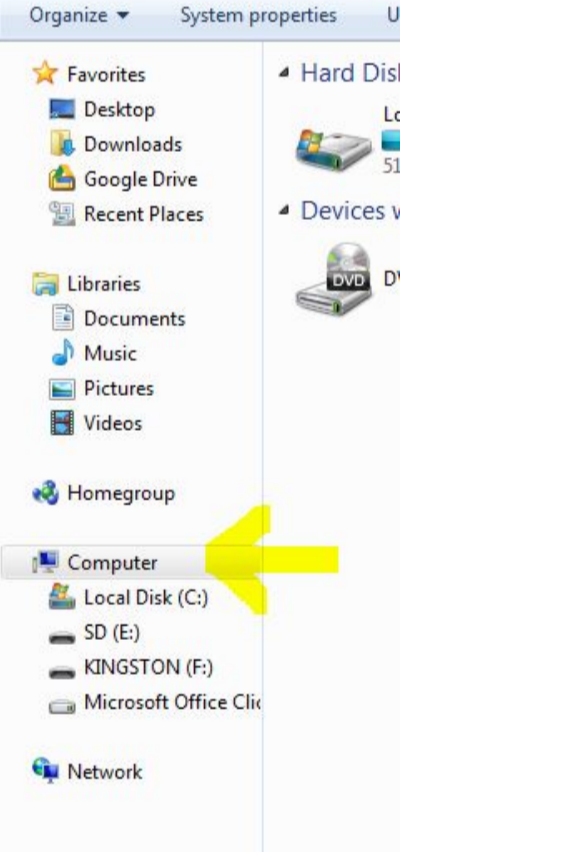
- 20.) At the end you see this window:



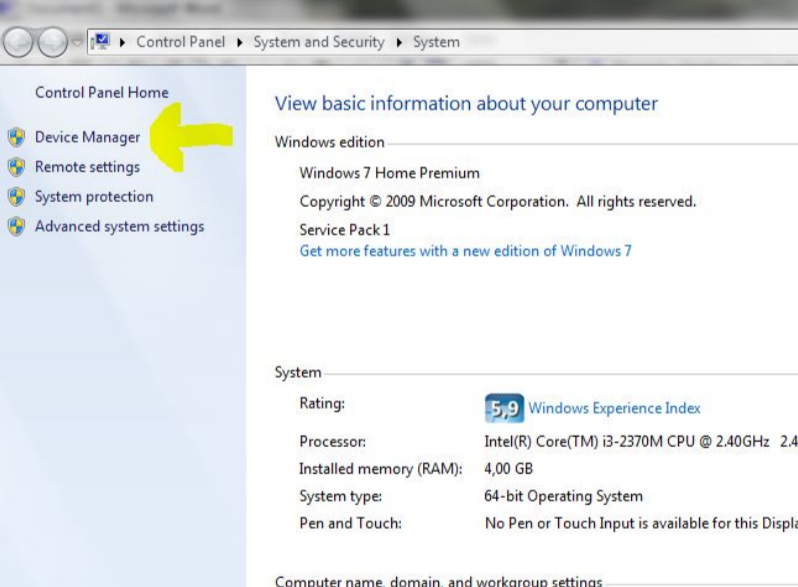
- 21.) Now test several notes with the updated machines

ISSUES:
 If in any case you have issues with the update, please check your device manager if the COM port from the USB cable has been correctly installed:

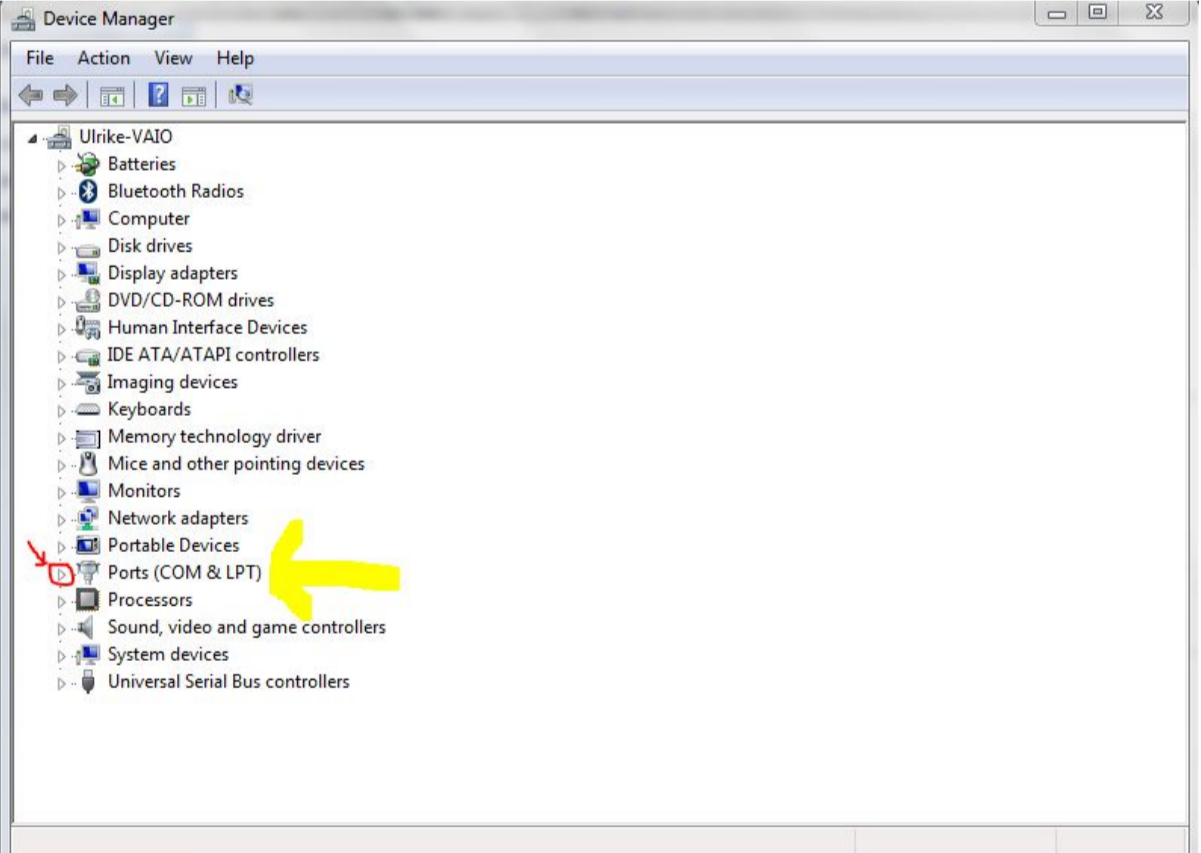
- In windows explorer RIGHT-click on "Computer" and chose "Properties"



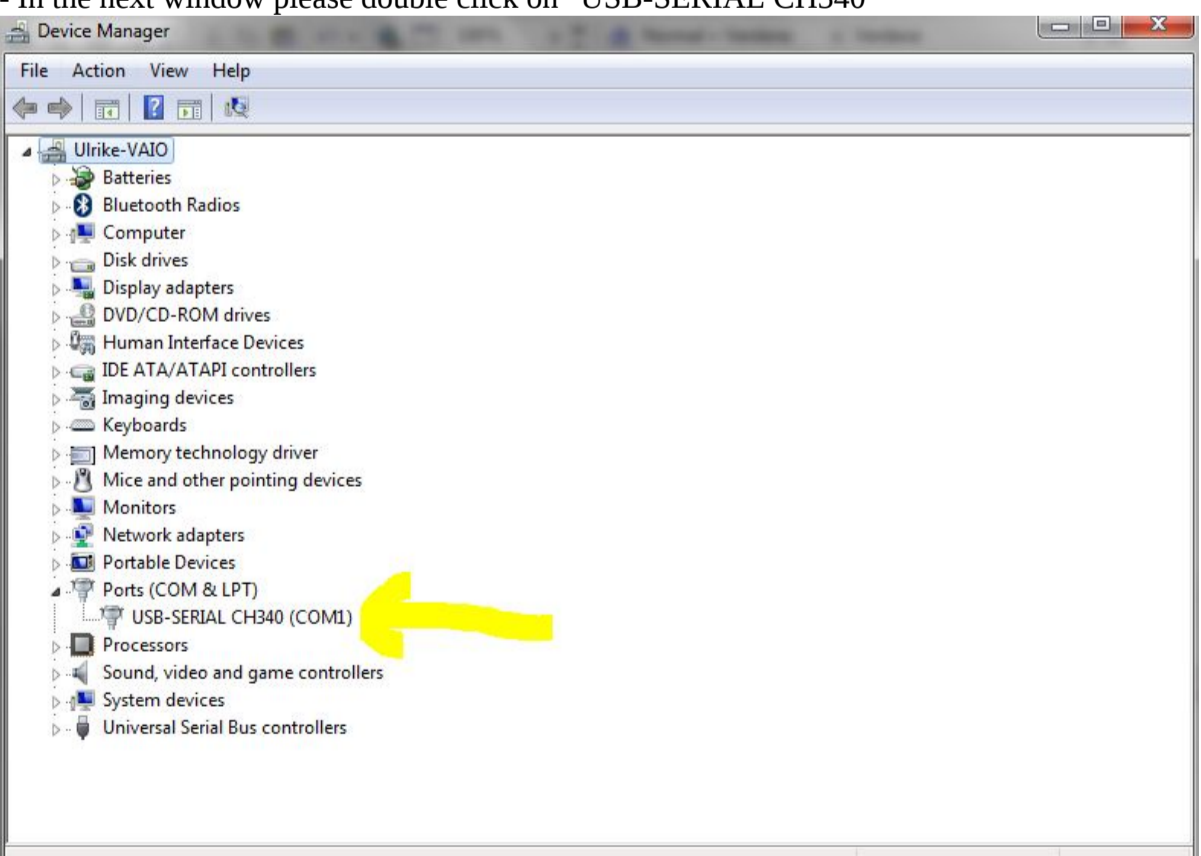
- In this window click on "Device Manager":



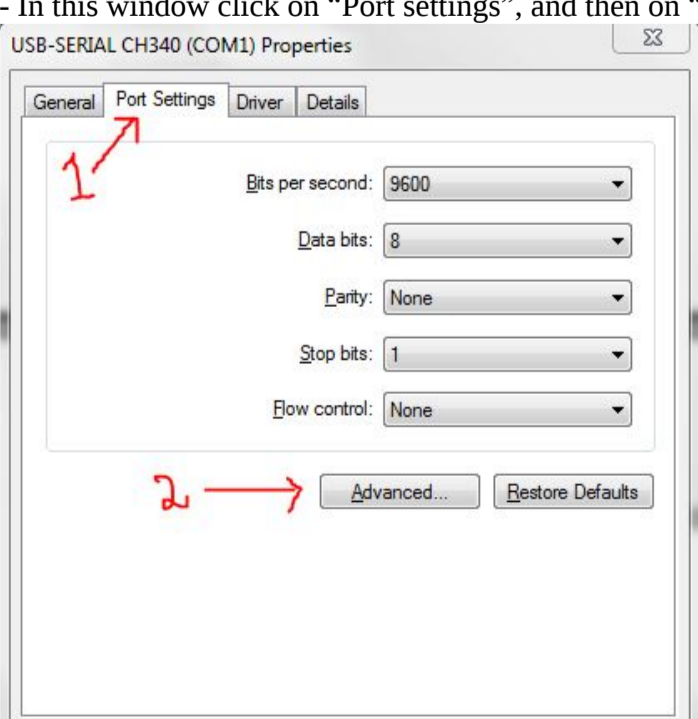
- Now the device manager window is open. Please click on the little arrow on the left of "Ports (COM & LPT):"



- In the next window please double click on "USB-SERIAL CH340"



- In this window click on "Port settings", and then on "Advanced"



- In this window click on "COM Port Number" and in the list chose COM1, COM2 or COM3

